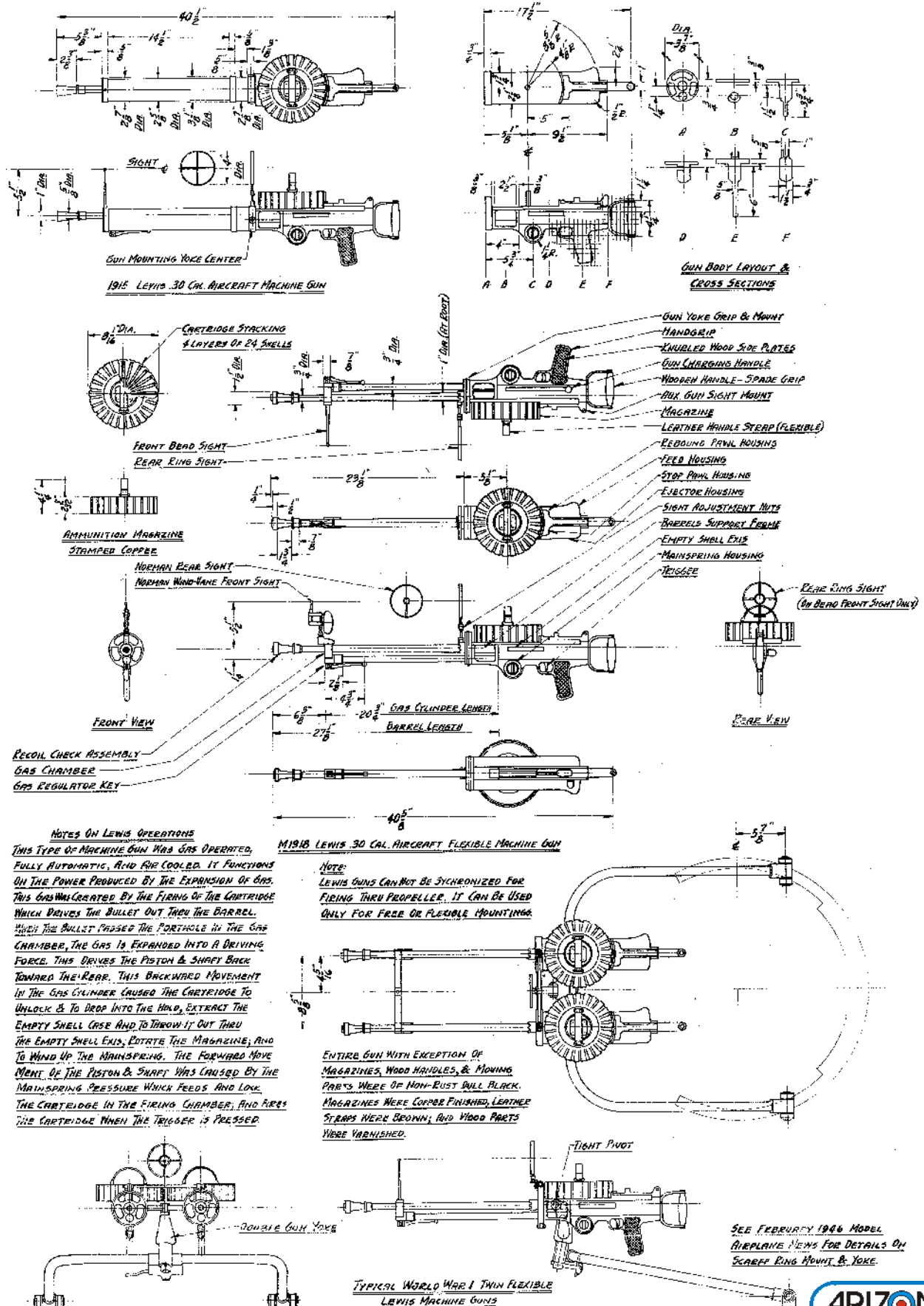




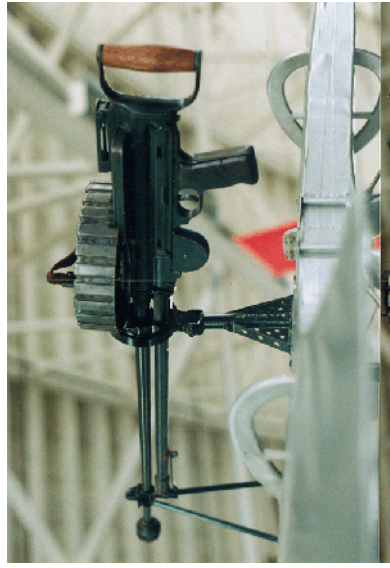
Lewis .30_{a1}

MACHINE GUN KIT

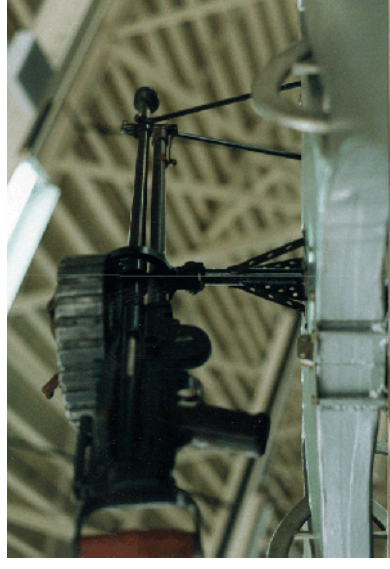
Assembly Directions- All Scales



Lewis Gun Arrangements use for option variations and measurement calculations.

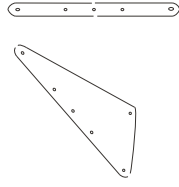


Nieuport 27
left view



Nieuport 27
right view

Mounting components for Nieuports



A E

Cover all mounting hardware parts in
aluminum metal finish and paint black.

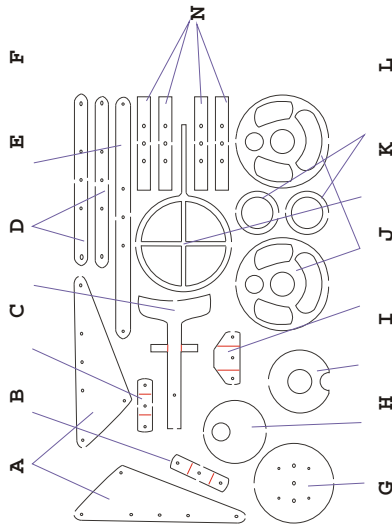


Foster Mount Detail
left view



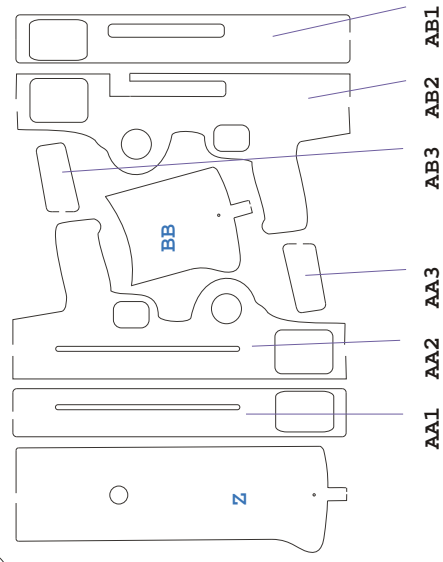
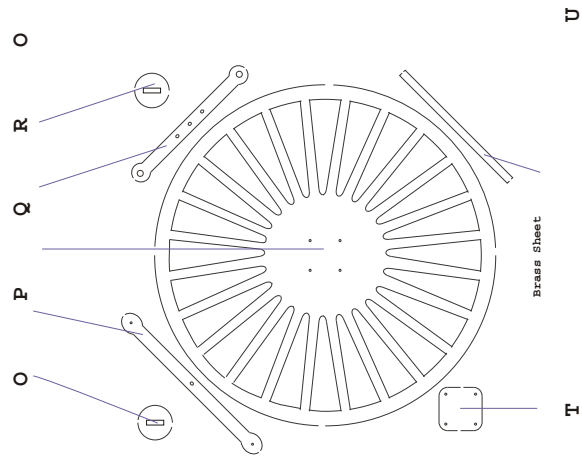
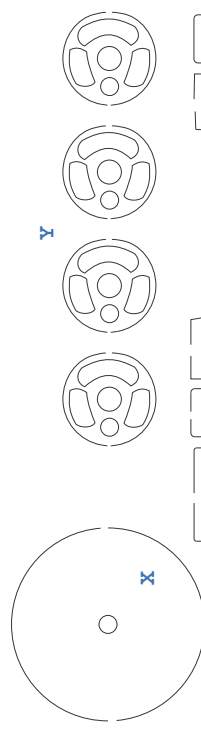
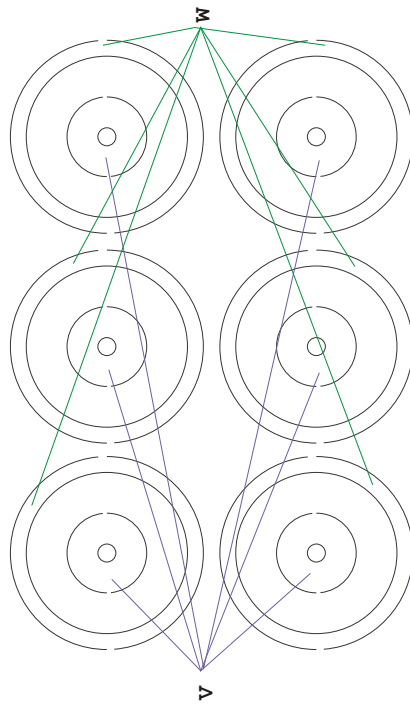
Foster Mount Detail
right view

Custom cut gun mounts are available from Arizona Model Aircrafters.
For price quotation mail an exact outline drawing of the parts required
for you project. Specify materials and quantities, we can laser cut wood,
brass, aluminum, and stainless steel in any scale or size.



Red lines designate fold lines. Attach parts to wire reinforcement as necessary for additional strength on flying models.

Note:
Parts layouts will vary with scale of kit.

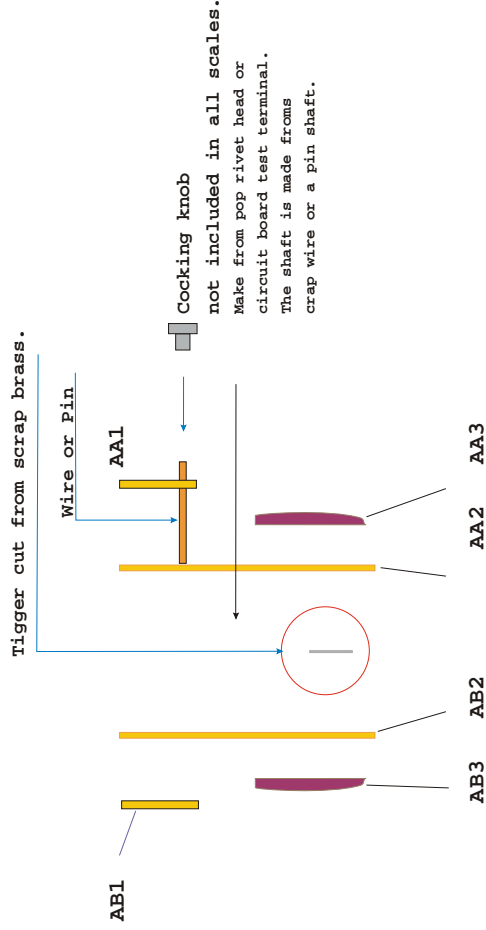


PARTS IDENTIFICATION
ALL SCALES

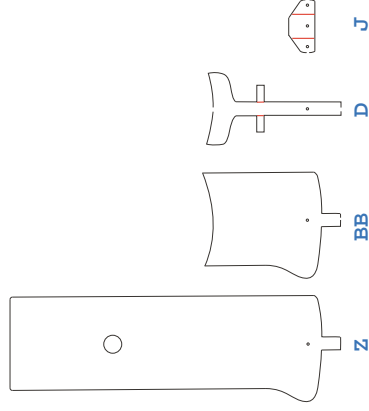
STEP 1

Lock Assembly

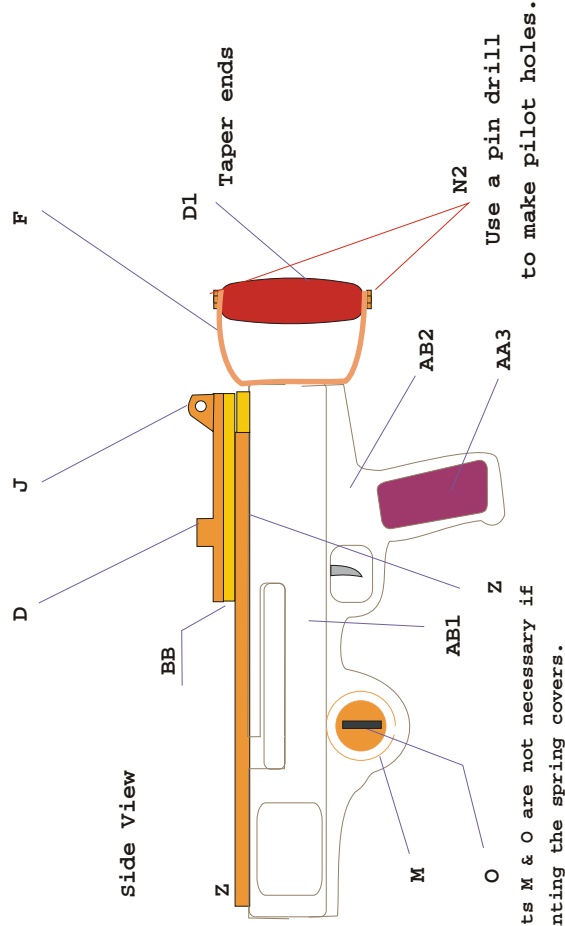
Laminate parts together as shown in the graphic. Additional details such as the trigger and cocking handle will vary depending on the scale kit you are building.



Lightly sand corners rounded refer to the full size diagrams.



End View



Parts M & O are not necessary if mounting the spring covers.

Stack top parts in the order as shown. Fold tabs on parts D and J up at a right angle at the red line. Soak wood parts with CA to increase strength.

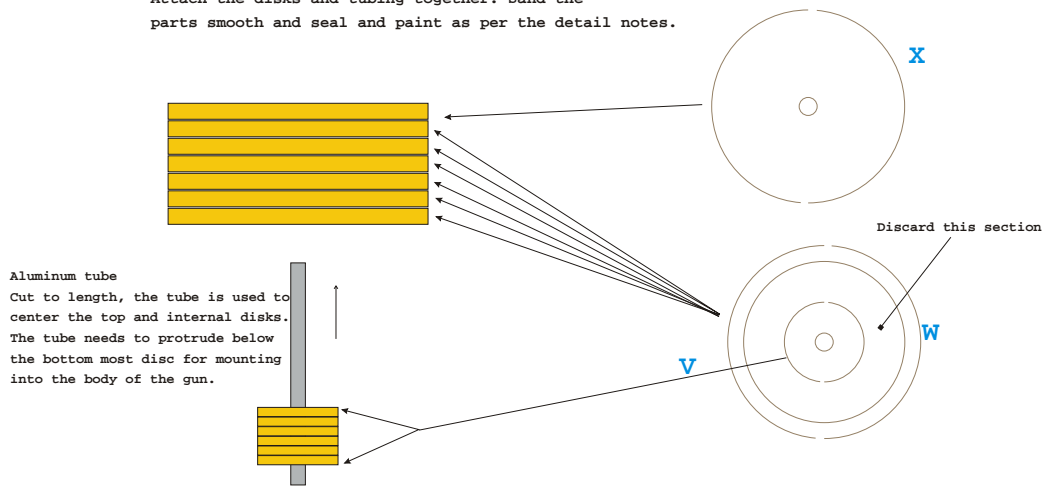
STEP 2

Magazine Assembly

Refer to page 1 for the proper scale thickness of single magazine or later double magazines.

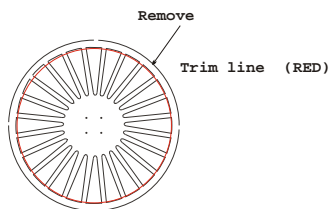
Step one

Attach the disks and tubing together. Sand the parts smooth and seal and paint as per the detail notes.



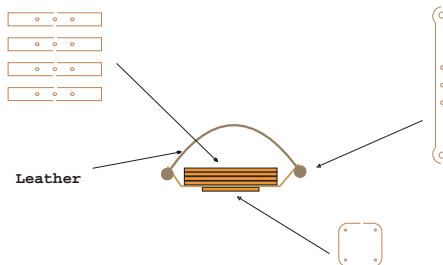
Step two

Remove the outer ring from the foil and glue the star to the top and sides of the magazine assembly. Wrap the outer tips around inside the magazine assembly.



Step Three

Stack the foil and wood parts as shown. Secure the handle parts to the top of the magazine with three brass brads for the handle and 4 screws for the plate (you will need to drill the holes through). Attach the leather through the two eyelet's for the handle. Make sure that everything is secure.



Barrel Assembly



ARIZONA
Model Aircrafters

STEP 4

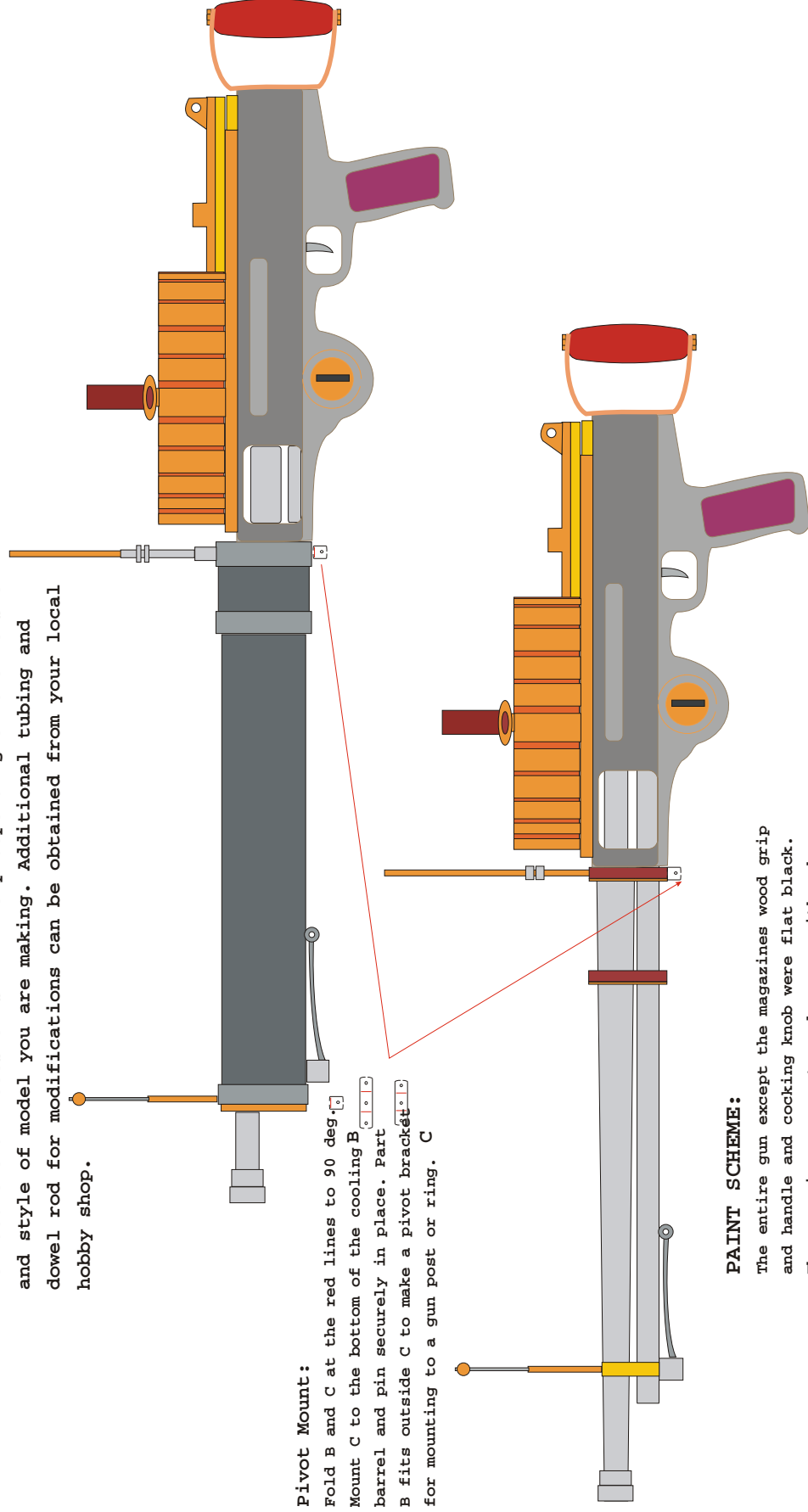
Final Assembly

Assembly Notes: (All Scales)

Included in the kit are the basic parts necessary to build the Lewis Gun with a cooling barrel as used in our DH1A airplane kit. As you build the gun refer to the detail drawings for additional notes this will help depending on the version and style of model you are making. Additional tubing and dowel rod for modifications can be obtained from your local hobby shop.

Barrel Mounting:

Drill the front end of the lock assembly to accept the rifle barrel and gas tube secure firmly in place.



Pivot Mount:

Fold B and C at the red lines to 90 deg.
Mount C to the bottom of the cooling B
barrel and pin securely in place. Part
B fits outside C to make a pivot bracket
for mounting to a gun post or ring. C

PAINT SCHEME:

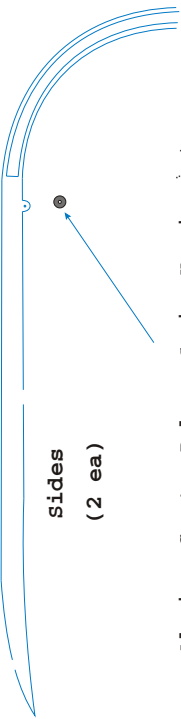
The entire gun except the magazines wood grip and handle and cocking knob were flat black. The magazines were stamped copper with a brown leather handle, the grips and back handle are varnished.

BE SURE to use a good wood sealer before painting to obtain the best results.

Front Mount
(glue to center section)



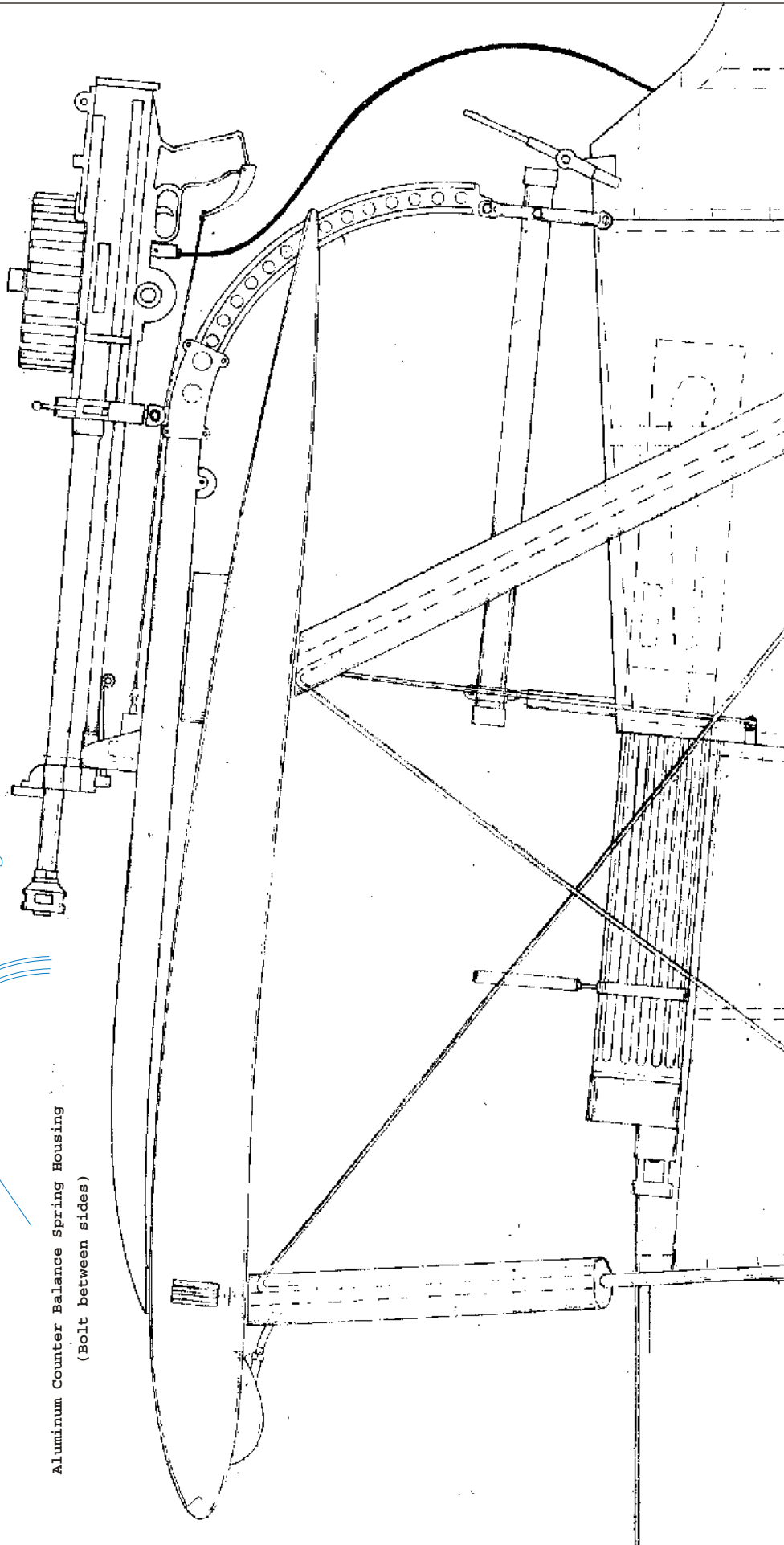
Sides
(2 ea)



Aluminum Counter Balance Spring Housing
(Bolt between sides)

Rear Mount

(Bolt halves together over assembled rail,
cut sections of brass tubing as standoffs for bolts)



Arrangement Shown on SE5a.